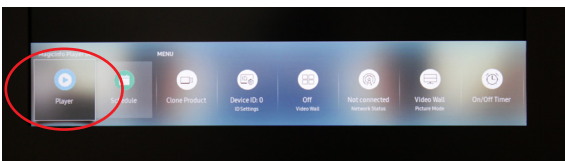


## UPLOADING CONTENT VIA USB MEMORY STICK

### 1. Find your USB memory stick

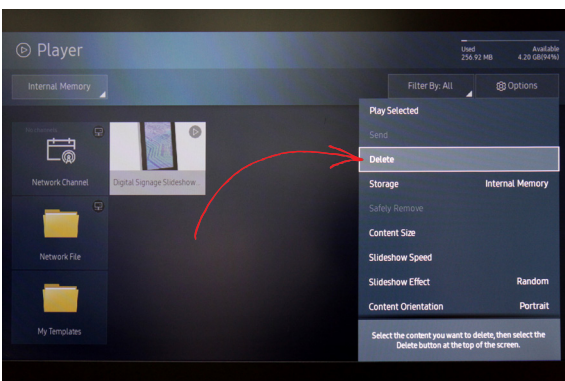
Switch on the device > Press the Home button to enter the menu > Go to the play icon and press Enter> at Int. Memory find your USB stick > Options (right) shows all content options



### 2. Clean up internal storage

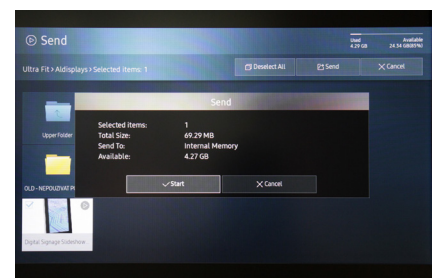
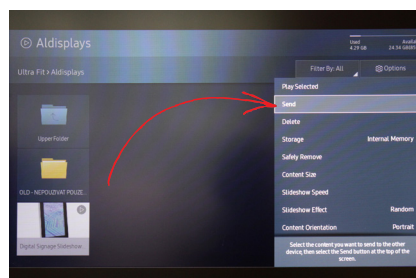
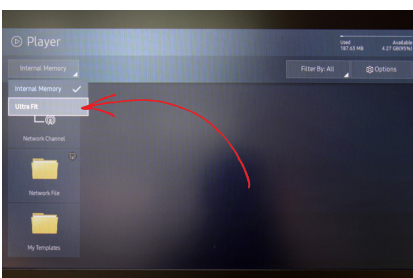
We recommend to delete the existing content. Otherwise you will show all existing content in an endless loop.

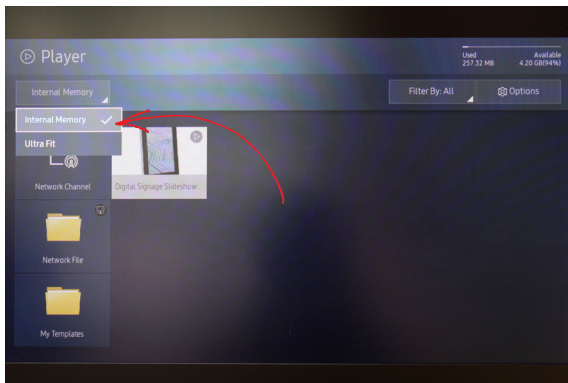
In the overview of your content in the upper right corner, go to Options > Delete > Enter > select the right file > Delete > Enter



### 3. Content integraion

Top left select the USB stick > Options > Send > select the correct image / video > Enter > Send > now you see „internal memory“> Enter > Start to play > OK to confirm



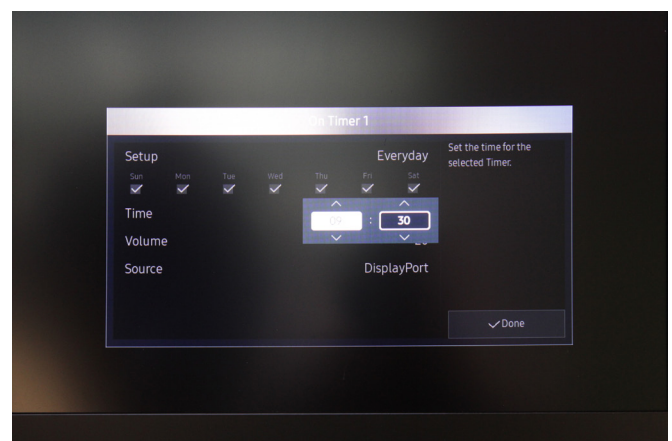
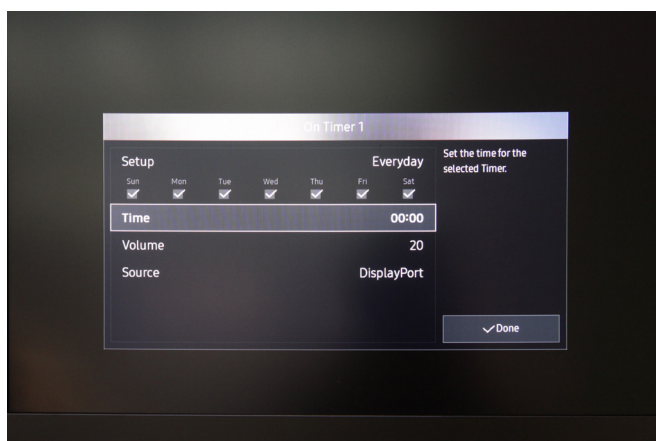
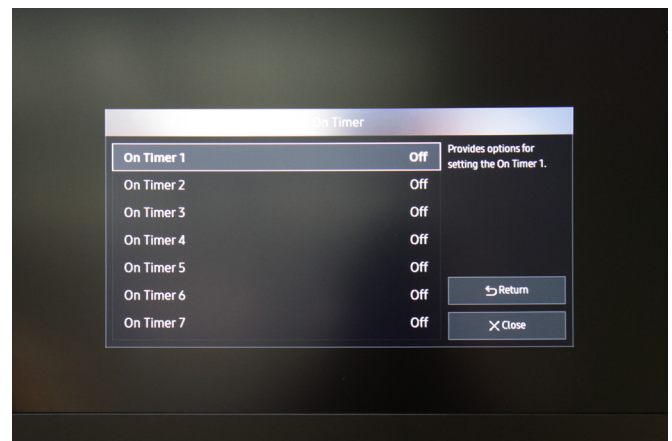
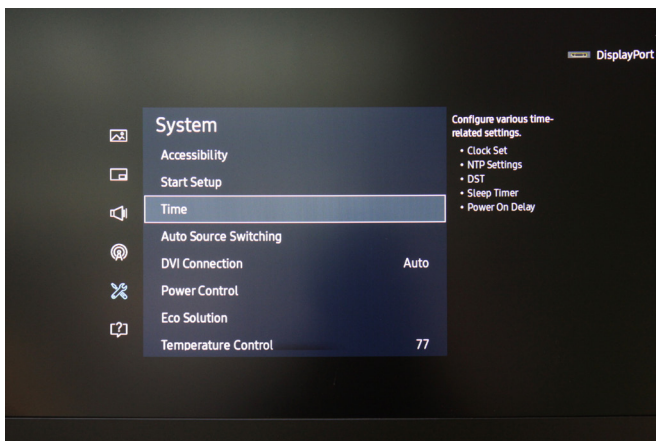


#### 4. Stop and play video files

To stop the video > Cancel > Int. Memory > Select File > Enter

#### 5. Set playing and operating times

If necessary set the correct date and time Menu > System > Time



For more detailed information check out the full manual:

[https://displaysolutions.samsung.com/pdf/manual/1348/MagicInfo\\_Express\\_2.5\\_Manual - Eng 1.2.pdf](https://displaysolutions.samsung.com/pdf/manual/1348/MagicInfo_Express_2.5_Manual_-_Eng_1.2.pdf)